



Friday Maths Session

Money Starter

The ice-cream costs 40 p and the apple costs 17 p. How much money do I need?

Draw the coins I can use to buy them.



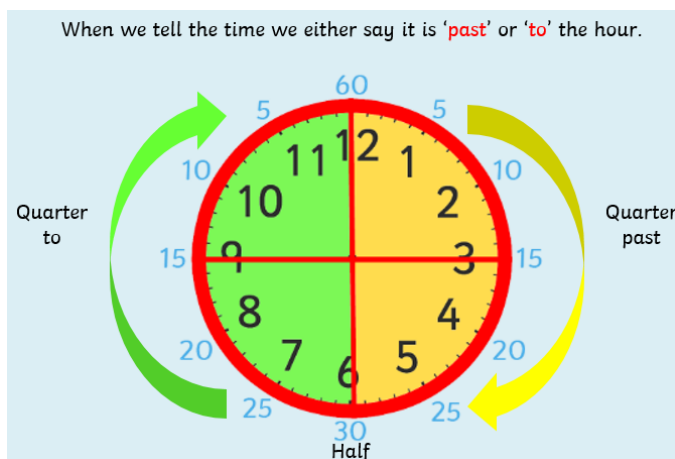
Recap of Time Remember we measure time in seconds, minutes and hours. Fill in the missing numbers:

There are _____ seconds in a minute.

There are _____ minutes in an hour.

There are _____ hours in a day.

Answers: 60 24 60

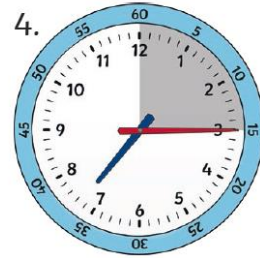
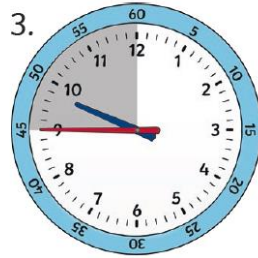
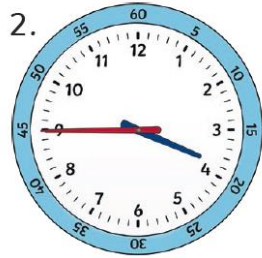
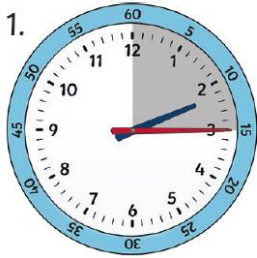


For quarter past, the long hand is on the 3. This means the minutes hand has travelled a quarter of the way around the clock, or 15 minutes.

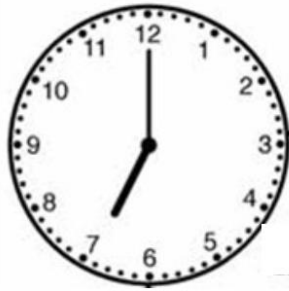
For quarter to, the long hand is on the 9. This means there are 15 minutes until the long hand gets back to the 12.

Activities

Are these clocks showing quarter to or quarter past?



Match the time to the clock:

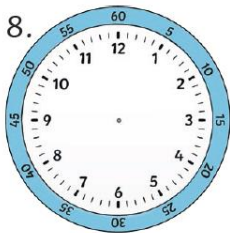


7.

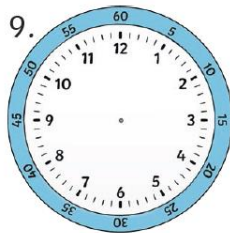
8.

9.

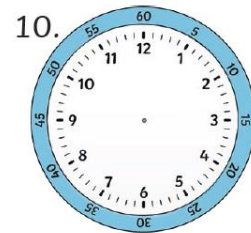
Draw on the hands to show the following times. Remember to make sure your **minutes** hand is **long** and the **hour** hand is **short**.



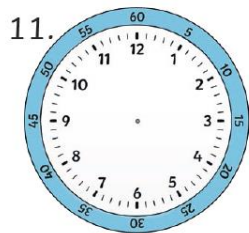
Quarter to 4



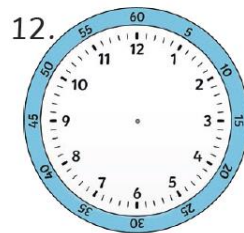
Half past 3



Quarter past 10



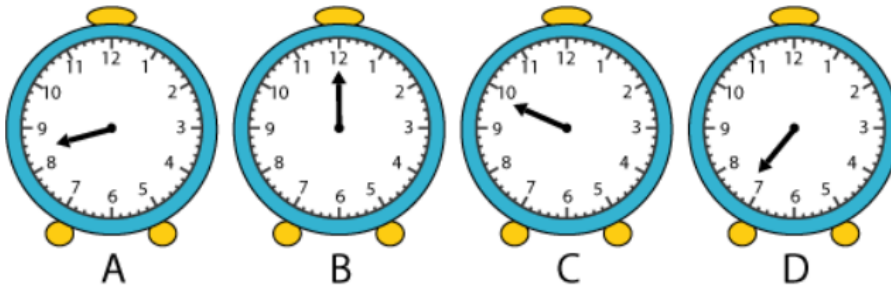
Quarter to 12



Quarter past 5

Challenge (a tricky one!)

Sam and Julie are friends. Both of them have rather odd clocks at home. In Sam's bedroom there is an old alarm clock which his Dad had thrown out because it had lost its minute hand. Although it has only its small hand, Sam can still tell the time using it. He can tell the hour, such as midday. He can tell when it is time to get up, time to go to school and time to turn his light out at night.



Which clock is showing it is midday?
At what time does Sam get up?
At what time does Sam go to school?
At what time is Sam supposed to turn out his light?

Plenary

Try any of the games here:

<https://www.topmarks.co.uk/Flash.aspx?f=matchingpairstimev3>



Today we have been working with analogue clocks.



You can also look at digital clocks on this game.